

RAY VILLAGE RETIREMENT UNITS

Available Now: **Unit 61 Ray Village**

Unit Type: 3 bedroom near beachfront duplex unit

Unit This sensational near beachfront, three bedroom unit is brand new and available for immediate occupancy. The limestone & rendered architect designed stand alone unit is completely fitted out with quality floor covering & window treatment and is a very short walk from the beach.

Price: \$503,000

Fees: \$88.50/week

Contact details: Marg Hall on 9750 2010

What is a Life Lease?

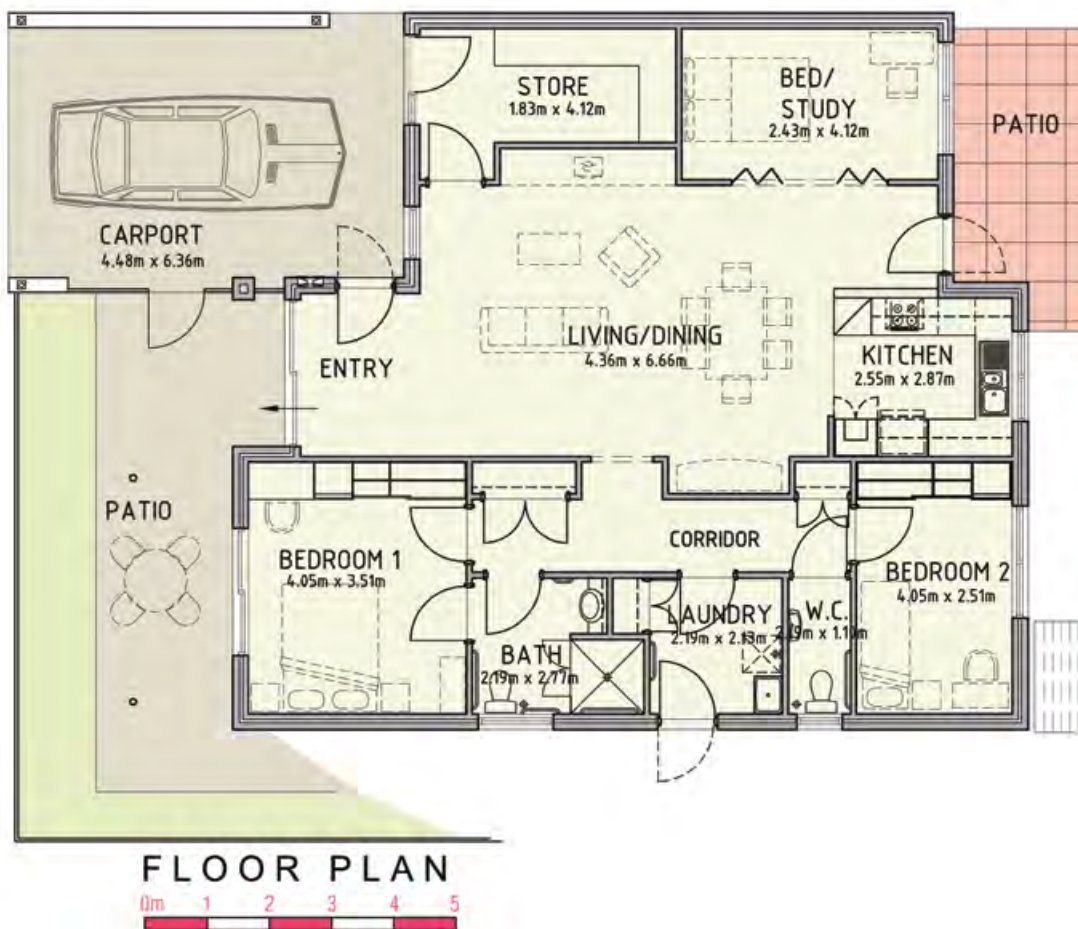
Residents purchase the unit by entering into an agreement called a Residence Contract, which gives them a lease over their selected unit for life.



The information in this brochure is correct as of [August 2011](#) but is subject to change without notice

“RAY VILLAGE” BEACHSIDE RETIREMENT VILLAGE

Type 2 Second Row Beach Front Units - 3 Bed Unit



“RAY VILLAGE” BEACHSIDE RETIREMENT VILLAGE

Village features:

- Magnificent beachside location on picturesque Geographe Bay
- Sites have a North-South aspect
- Boat I Caravan Parking area for residents
- Optional “In-Home Care” services by an organisation with over 40 years experience
- All units have been designed by award winning architects, Peter Hunt & Associates and built by renowned Southwest builders, Perkins Builders

3 Bedroom Unit Features include:

- 3 bedrooms - bedroom 1 features semi - ensuite facilities
- Stunning decor
- Quality fittings
- 2 WC’s with hand basin in guest WC
- Large storeroom with access from carport and internal area
- Enclosed, secure front courtyard
- Fully reticulated and landscaped gardens
- Extra wide carport
- ‘Infinity’ gas hot water system
- Double insulated roof and ceilings
- Numerous double power points throughout Unit
- Three telephone and two TV outlets
- Emergency call system
- Imported ceramic tile in kitchen and all wet areas
- Stainless steel gas cook top
- Stainless steel electric oven and range hood
- Gas bayonet to living area
- Electric door chime

